



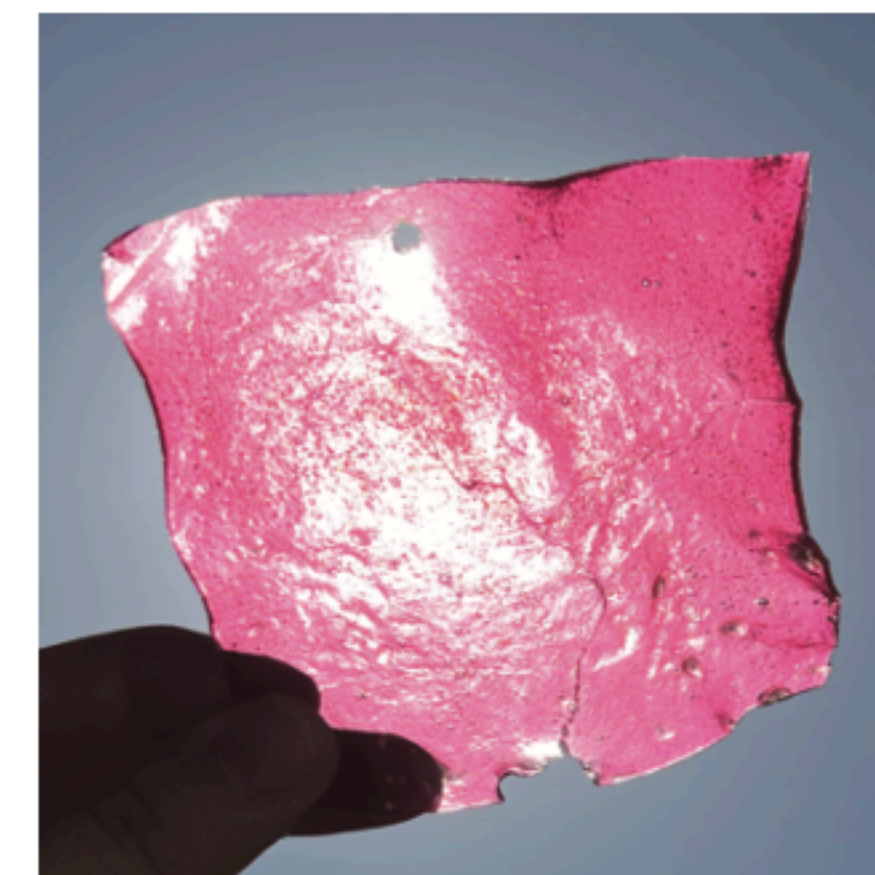
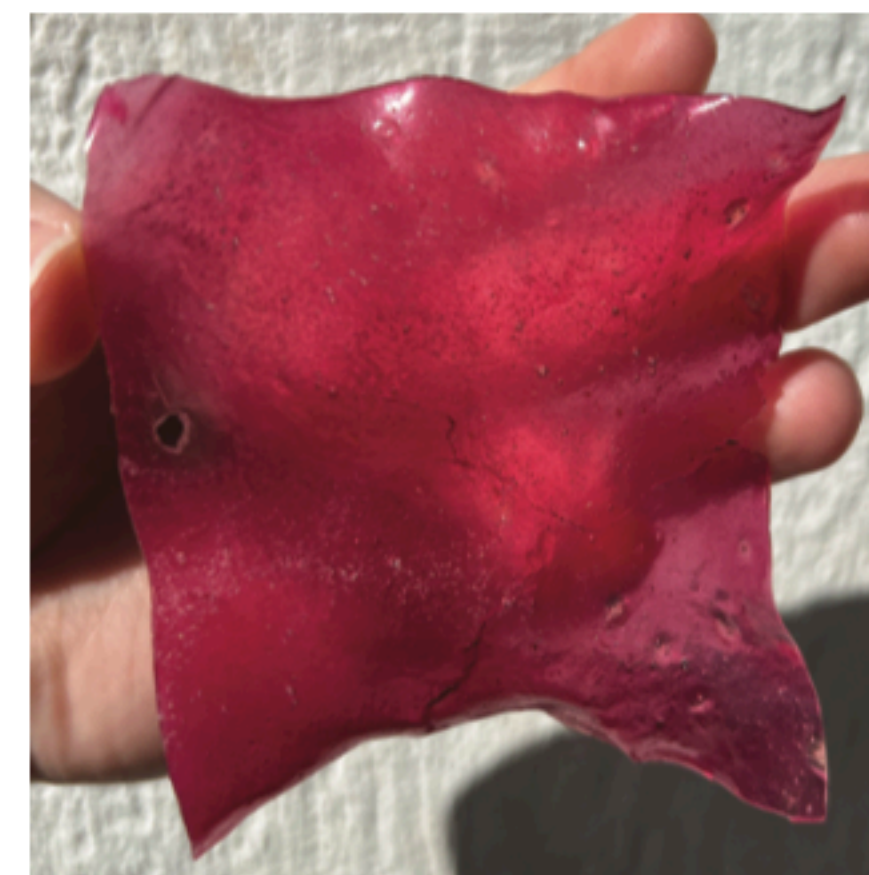
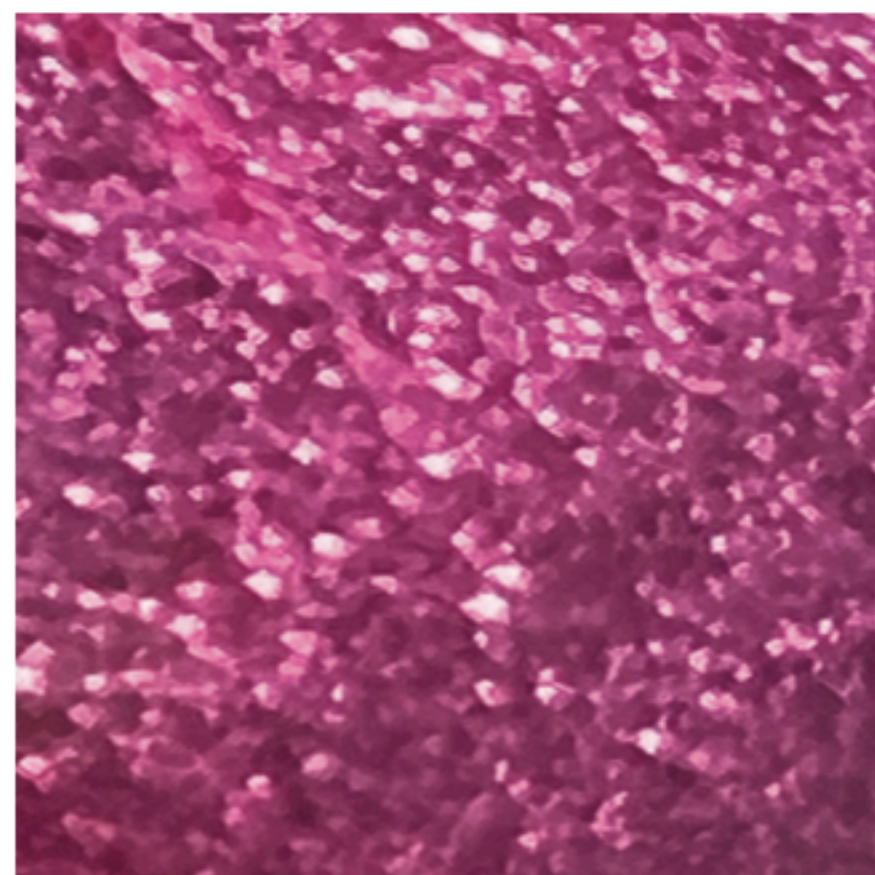
## Recepie 01

### Forming Technique

- SHEARING

### References

- <https://www.wikihow.com/Make-Bioplastic>



### Ingredient List



Glycerine



Hot Water



Gelatine



Beet Juice(For coloring:Optional)

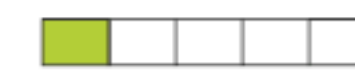


### Preperation Steps



### Material Assessments

hard



soft

smooth



rough

matte



glossy

elastic



not elastic

strong



weak

opaque



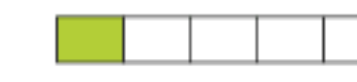
transparent

tough



ductile

light



heavy

fibred



not-fibred