



## Ingredient List



15 g Corn Starch



130 ml Water



5 g Glycerol



15 ml Vinegar



5 g clay

## Preparation Steps



1

Mix all ingredients.



10 min.

2

Cook over medium heat until it becomes liquid.



3

Spoon a thin layer of the mixture into a nonstick mold.



4 days

4

Let it air-dry for 4 days.

## Material Assessments

Hard	<div><div></div><div></div><div></div><div></div><div></div></div>	Soft
Smooth	<div><div></div><div></div><div></div><div></div><div></div></div>	Rough
Matte	<div><div></div><div></div><div></div><div></div><div></div></div>	Glossy
Elastic	<div><div></div><div></div><div></div><div></div><div></div></div>	Not elastic
Strong	<div><div></div><div></div><div></div><div></div><div></div></div>	Weak

Opaque	<div><div></div><div></div><div></div><div></div><div></div></div>	Transparent
Though	<div><div></div><div></div><div></div><div></div><div></div></div>	Ductile
Light	<div><div></div><div></div><div></div><div></div><div></div></div>	Heavy
Fibric	<div><div></div><div></div><div></div><div></div><div></div></div>	Not fibric

References:  
[Bioplastic Cook Book: Corn Starch + Clay](#)



EGGSHELL

## Ingredient List



15 g Corn Starch



100 ml Water



5 ml Glycerol



40 g eggshell



## Preparation Steps



1

Boil the eggshells.



2

Dry the eggshells.



3

Grind them to a fine powder.



4

Dissolve corn starch in water.



5

Heat the mixture over low heat.



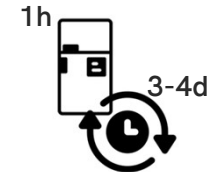
6

Add glycerol and eggshells.



7

Pour the mixture into a flat tray mold.



8

Freeze for 1 hour, then air dry for 3-4 days.

## Material Assessments

Hard	<div><div></div><div></div><div></div><div></div><div></div><div></div></div>	Soft
Smooth	<div><div></div><div></div><div></div><div></div><div></div><div></div></div>	Rough
Matte	<div><div></div><div></div><div></div><div></div><div></div><div></div></div>	Glossy
Elastic	<div><div></div><div></div><div></div><div></div><div></div><div></div></div>	Not elastic
Strong	<div><div></div><div></div><div></div><div></div><div></div><div></div></div>	Weak

Opaque	<div><div></div><div></div><div></div><div></div><div></div><div></div></div>	Transparent
Though	<div><div></div><div></div><div></div><div></div><div></div><div></div></div>	Ductile
Light	<div><div></div><div></div><div></div><div></div><div></div><div></div></div>	Heavy
Fiberic	<div><div></div><div></div><div></div><div></div><div></div><div></div></div>	Not fiberic






References:  
[Materiom : Eggshell-Starch Biomaterial](#)



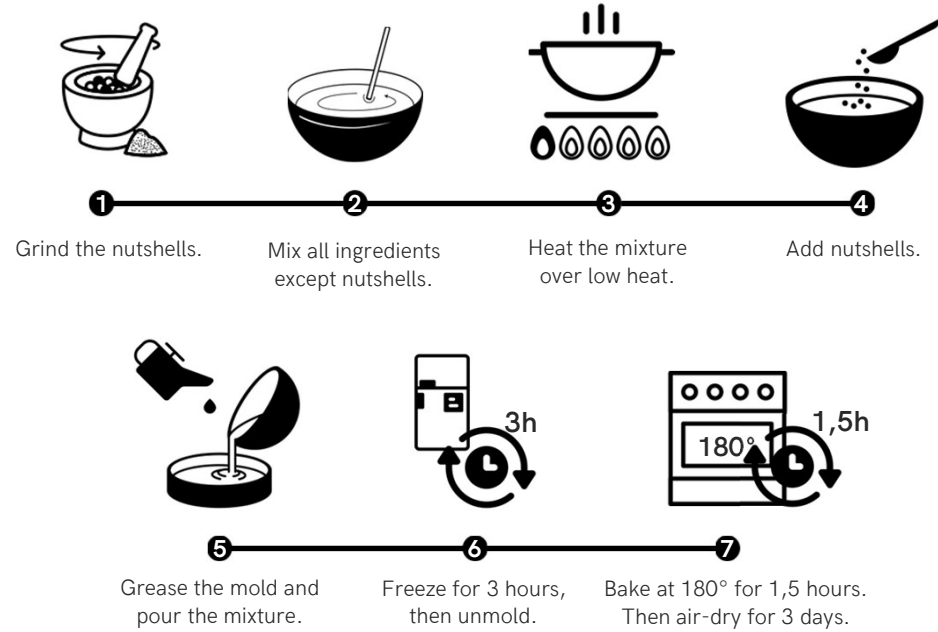
NUTSHELL

### Ingredient List



-  10 g - 1/2 tbsp  
Corn Starch
-  40 ml - 4 tbsp  
Water
-  10 ml - 1 tbsp  
Glycerol
-  Nutshells
-  1tsp Vinegar

### Preparation Steps



### Material Assessments

Hard	<div><div></div><div></div><div></div><div></div><div></div><div></div></div>	Soft	<div><div></div><div></div><div></div><div></div><div></div><div></div></div>
Smooth	<div><div></div><div></div><div></div><div></div><div></div><div></div></div>	Rough	<div><div></div><div></div><div></div><div></div><div></div><div></div></div>
Matte	<div><div></div><div></div><div></div><div></div><div></div><div></div></div>	Glossy	<div><div></div><div></div><div></div><div></div><div></div><div></div></div>
Elastic	<div><div></div><div></div><div></div><div></div><div></div><div></div></div>	Not elastic	<div><div></div><div></div><div></div><div></div><div></div><div></div></div>
Strong	<div><div></div><div></div><div></div><div></div><div></div><div></div></div>	Weak	<div><div></div><div></div><div></div><div></div><div></div><div></div></div>
Opaque	<div><div></div><div></div><div></div><div></div><div></div><div></div></div>	Transparent	<div><div></div><div></div><div></div><div></div><div></div><div></div></div>
Though	<div><div></div><div></div><div></div><div></div><div></div><div></div></div>	Ductile	<div><div></div><div></div><div></div><div></div><div></div><div></div></div>
Light	<div><div></div><div></div><div></div><div></div><div></div><div></div></div>	Heavy	<div><div></div><div></div><div></div><div></div><div></div><div></div></div>
Fiberic	<div><div></div><div></div><div></div><div></div><div></div><div></div></div>	Not fiberic	<div><div></div><div></div><div></div><div></div><div></div><div></div></div>

### References:

[NØD - BIOMATERIAL RESEARCH](#) | [Behance](#)



TEA GROUNDS

## Ingredient List



12 g Gelatine



60 ml Water



5 ml Aloe Vera Gel



10 gr Tea Grounds



## Preparation Steps



1

Mix all ingredients.



2

Heat the mixture over medium heat until it begins to froth.



3

Pour the mixture into a flat tray mold.



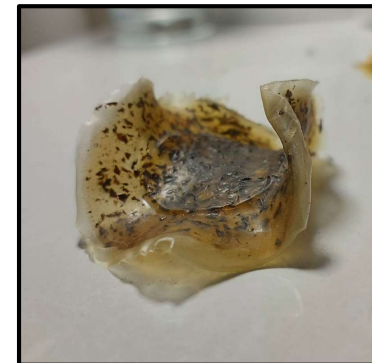
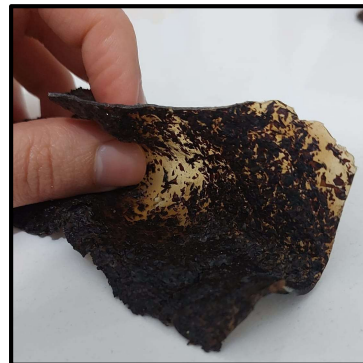
5-6 days

Wait 5 to 6 days for it to dry completely.

## Material Assessments

Hard	<div><div></div><div></div><div></div><div></div><div></div></div>	Soft
Smooth	<div><div></div><div></div><div></div><div></div><div></div></div>	Rough
Matte	<div><div></div><div></div><div></div><div></div><div></div></div>	Glossy
Elastic	<div><div></div><div></div><div></div><div></div><div></div></div>	Not elastic
Strong	<div><div></div><div></div><div></div><div></div><div></div></div>	Weak

Opaque	<div><div></div><div></div><div></div><div></div><div></div></div>	Transparent
Though	<div><div></div><div></div><div></div><div></div><div></div></div>	Ductile
Light	<div><div></div><div></div><div></div><div></div><div></div></div>	Heavy
Fiberic	<div><div></div><div></div><div></div><div></div><div></div></div>	Not fiberic



References:  
[Materiom : Tea Grounds Bioplastic](#)

DİLEK ASLAN & HANIYA MUSTAFA



LACORICE ROOT

### Ingredient List



12 g Gelatine



60 ml Water



5 ml Honey



Locorice root



### Preperation Steps



1

Boil licorice root and strain.



2

Mix all ingredients except locorice root.



3

Heat the mixture over medium heat.



4

Place the licorice roots and pour the mixture.



5

Wait for it to dry completely.  
5-6 days

### Material Assessments

Hard	<div><div></div><div></div><div></div><div></div><div></div></div>	Soft
Smooth	<div><div></div><div></div><div></div><div></div><div></div></div>	Rough
Matte	<div><div></div><div></div><div></div><div></div><div></div></div>	Glossy
Elastic	<div><div></div><div></div><div></div><div></div><div></div></div>	Not elastic
Strong	<div><div></div><div></div><div></div><div></div><div></div></div>	Weak

Opaque	<div><div></div><div></div><div></div><div></div><div></div></div>	Transparent
Though	<div><div></div><div></div><div></div><div></div><div></div></div>	Ductile
Light	<div><div></div><div></div><div></div><div></div><div></div></div>	Heavy
Fiberic	<div><div></div><div></div><div></div><div></div><div></div></div>	Not fiberic



References:  
[Materiom : Tea Grounds Bioplastic](#)



COFFEE

## Ingredient List



12 g Gelatine



120 ml Water



5 ml Honey



3 tbsp Coffee Grains



## Preperation Steps



1

Mix all ingredients.



2

Heat the mixture over medium heat until the solution begins to froth.



3

Pour the mixture into a flat tray mold.



2-3 days

Wait 2 to 3 days for it to dry completely.

## Material Assessments

Hard	<div><div></div><div></div><div></div><div></div><div></div><div></div><div></div><div></div><div></div><div></div></div>	Soft
Smooth	<div><div></div><div></div><div></div><div></div><div></div><div></div><div></div><div></div><div></div><div></div></div>	Rough
Matte	<div><div></div><div></div><div></div><div></div><div></div><div></div><div></div><div></div><div></div><div></div></div>	Glossy
Elastic	<div><div></div><div></div><div></div><div></div><div></div><div></div><div></div><div></div><div></div><div></div></div>	Not elastic
Strong	<div><div></div><div></div><div></div><div></div><div></div><div></div><div></div><div></div><div></div><div></div></div>	Weak

Opaque	<div><div></div><div></div><div></div><div></div><div></div><div></div><div></div><div></div><div></div><div></div></div>	Transparent
Though	<div><div></div><div></div><div></div><div></div><div></div><div></div><div></div><div></div><div></div><div></div></div>	Ductile
Light	<div><div></div><div></div><div></div><div></div><div></div><div></div><div></div><div></div><div></div><div></div></div>	Heavy
Fiberic	<div><div></div><div></div><div></div><div></div><div></div><div></div><div></div><div></div><div></div><div></div></div>	Not fiberic

References:  
[Materiom : Tea Grounds Bioplastic](#)



DİLEK ASLAN & HANIYA MUSTAFA



## Ingredient List



1 tbsp Gelatine



1 banana peel



1 tsp Vinegar



1 tsp Honey



1 tbsp cinnamon



## Preperation Steps



1

Blend banana peels.



2

Mix all ingredients and cook over medium heat.



3

Strain water from the mixture.



4

Pour into a nonstick mold.



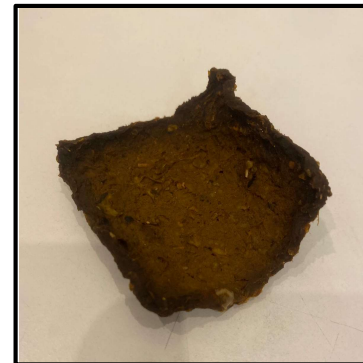
5

Let it air-dry for 4 days.

## Material Assessments

Hard	<div><div></div><div></div><div></div><div></div><div></div><div></div></div>	Soft
Smooth	<div><div></div><div></div><div></div><div></div><div></div><div></div></div>	Rough
Matte	<div><div></div><div></div><div></div><div></div><div></div><div></div></div>	Glossy
Elastic	<div><div></div><div></div><div></div><div></div><div></div><div></div></div>	Not elastic
Strong	<div><div></div><div></div><div></div><div></div><div></div><div></div></div>	Weak

Opaque	<div><div></div><div></div><div></div><div></div><div></div><div></div></div>	Transparent
Though	<div><div></div><div></div><div></div><div></div><div></div><div></div></div>	Ductile
Light	<div><div></div><div></div><div></div><div></div><div></div><div></div></div>	Heavy
Fiberic	<div><div></div><div></div><div></div><div></div><div></div><div></div></div>	Not fiberic



References:  
[Bioplastic from banana peels - YouTube](#)

DİLEK ASLAN & HANIYA MUSTAFA